

USER GUIDE

NOTE:

Please read this entire manual to fully understand and safely use this product.

Specifications are subject to change without notice. Please visit www.axisep.com for the most recent user guide versions.

Included in this Box

Axis LED T8 LED Tube (plug and play), 1 PCs

User Guide, 1 Set

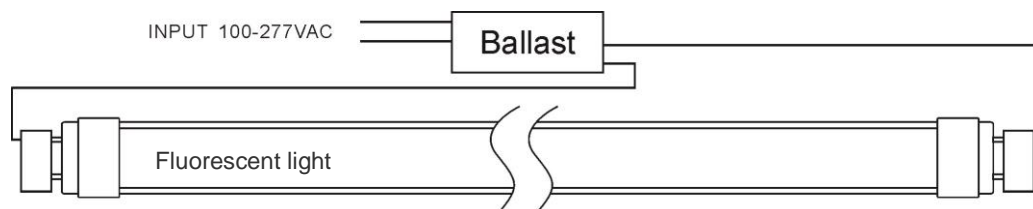
Important Instructions

The LED tube works directly at 100~277VAC. The installer must determine whether they have 100~277VAC at the luminaire before installation.

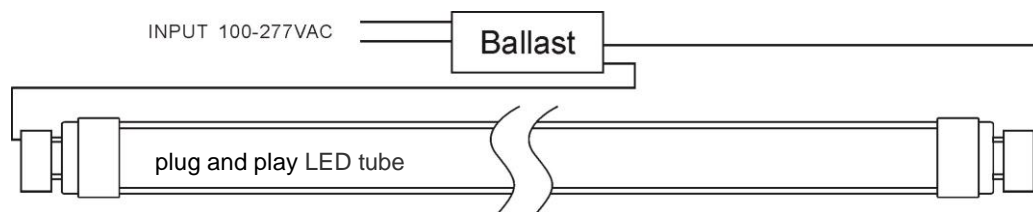
Installation Steps

Plug and Play procedure

1. Turn off the power to the light fixture at the breaker panel before installation.
2. Open the diffuser from the light fixture.
3. Remove the fluorescent tubes. Please dispose of these items properly as they contain mercury.



4. Put LED tube into the lighting fixture.

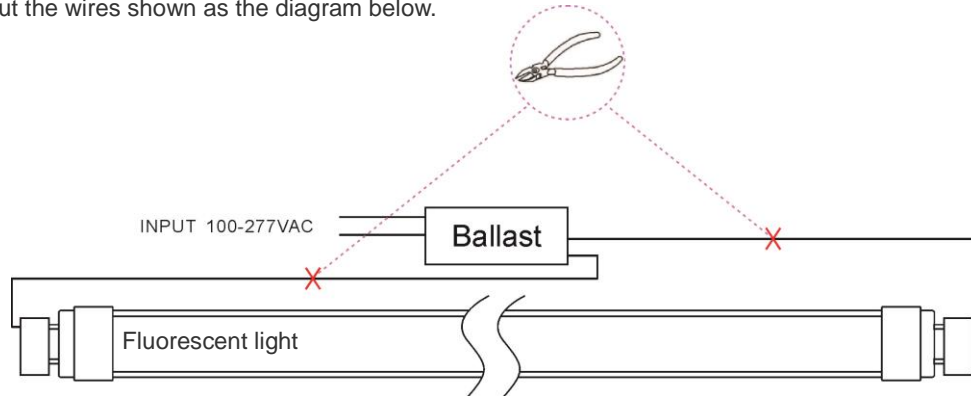


5. Install the LED tubes, close the diffuser.
6. Turn on the Power.

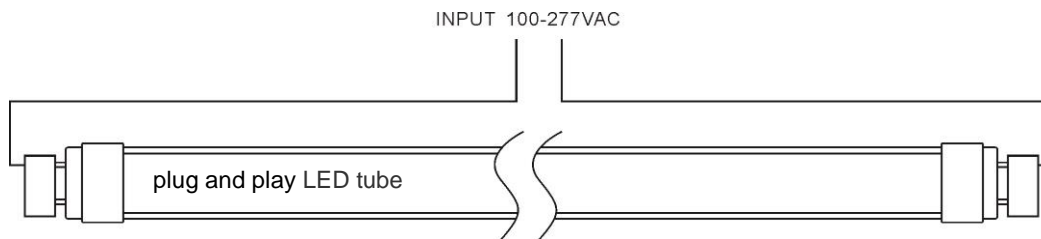
Retrofit Procedure

1. Turn off the power to the light fixture at the breaker panel before installation.
2. Open the diffuser from the light fixture.
3. Remove the fluorescent tubes. Please dispose of these items properly as they contain mercury.

4. Cut the wires shown as the diagram below.



5. Make the new wire connect to branch circuit shown as the diagram below.
6. Replace the cover over the wiring channel.
7. Install the LED tubes, close the diffuser.



8. Turn on the Power.